

CUSTOMER APPROVAL

Cust Name	
Cust Signature	
Approval Date	

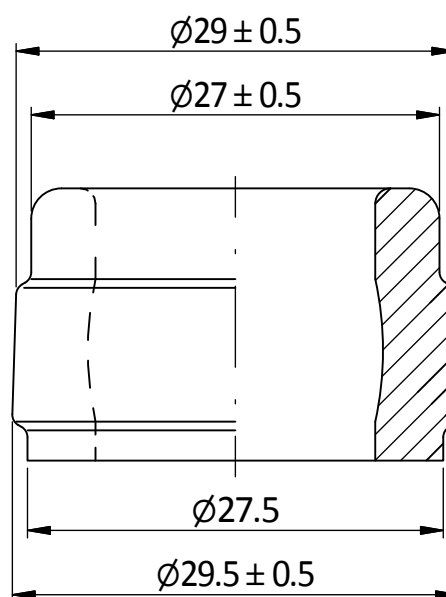
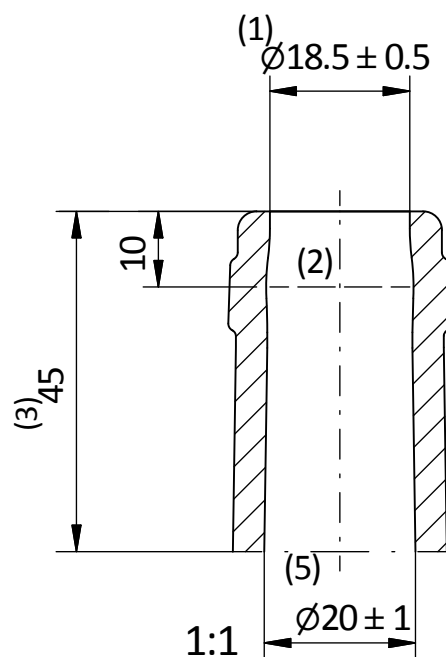
Customer Capacity	1.5L
Fill Point Volume	1505mL ± 7mL Nom @ 70mm
Brimful Volume	1526mL Nom
Weight	700g
Max. Gas Volumes	TBA
Tilt Angle	19.1°
Process	B&B

The WFA and the WPA recommend that the label should be positioned at a minimum of 5mm above the bottom of the designated label panel and a minimum of 5mm below the top of the designated label panel with a maximum label height that is equal to or less 10mm than is shown as the designated label panel height on the glass drawing

Customer Specifications - Orora Glass



Number	AG064_C02	B		
Description	1.5L BVS Claret - Lightweight AG040	A		
Date & Revision	14/10/15 Initial	Initial	Based on AG040 - lightweight 700g	14/10/2015
Finish	C02 - Plain Band Cork Mouth	Rev	Description	Date



2:1

BORE CONTROL

1. Mean bore entry is measured at 3mm from the top
2. Mean bore diameter at 10 mm is to be no larger than 1.0 mm greater than that at entry
3. Mean diameter at 45 mm is $20 \text{ mm} \pm 1 \text{ mm}$
4. The mean bore diameter for 45 mm must not be smaller than the bore at entry
5. The minimum through bore diameter is 17.5 mm

Customer Specifications - Orora Glass



Finish Number C02

Description Plain Band Cork Mouth Finish

Date & Revision 03/03/2004 Revision A