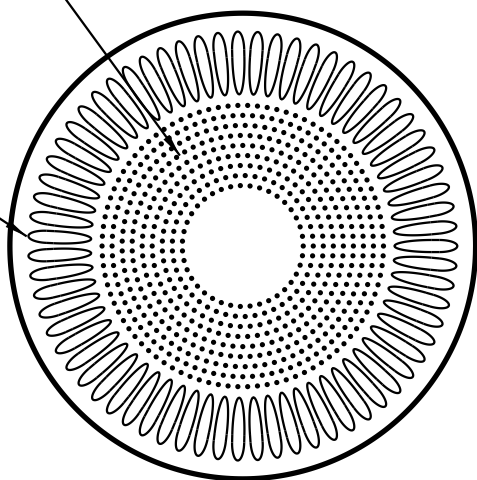


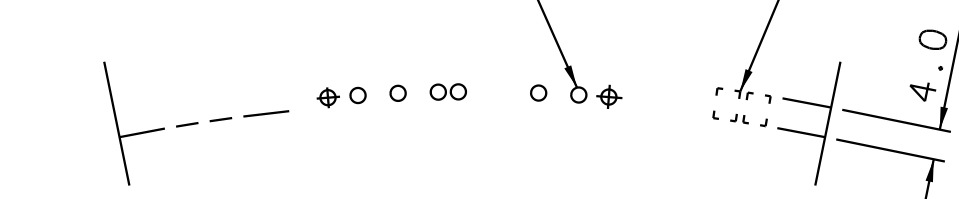
OM-5 machine stipple optional

Bar stipple on bearing surface



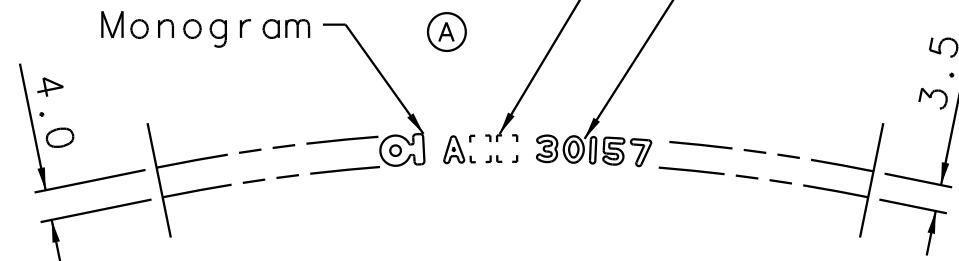
Cavity identification device

Cavity No.




Plant of manufacture

Reference No.



Developed engraving

3 Sept 09 FOR MARKETING APPROVAL		Copyright ACI Operations Pty Ltd 2009. Not to be copied in whole or part without the prior written permission of ACI Operations Pty Ltd. This design drawing contains information which is confidential to ACI Operations Pty Ltd and must be used only as directed by ACI Operations Pty Ltd. This design drawing must not be disclosed to anyone without the prior written consent of ACI Operations Pty Ltd. Customer hereby indemnifies and holds ACI operations Pty Ltd ("ACI") harmless for any loss, damage or liability which ACI may incur if the design, manufacture and supply of the bottles in accordance with the instructions or requirements of customer infringes the intellectual property rights of any third party.											
MINIMUM THROUGH BORE	17.5									SPECIFICATION AGREEMENTS ARE BASED ON TOLERANCED DIMENSIONS ONLY DO NOT SCALE DRAWING ALL DIMENSIONS ARE IN MILLIMETRES			
BRIMFUL VERIFIED	Yes (A)									 Asia Pacific Technical Centre			
TILT ANGLE PREDICTED	16.1°												
TILT ANGLE VERIFIED (A)	14.3°									TITLE 375ml BVS Claret			
MAXIMUM DEPTH OF STANDARD ENGRAVING	0.3	1	3.0 Panel dimensions added. Was 128.8 & 18.0	3 Sep 09	CS					CUSTOMER Stock			
MAX. GAS VOLUMES	N/A	4	Tilt angle & Brimful verified, Monogram & Plant of manufacture updated, was 385.0 Approx.	15 JAN 08	AM YZ					CUSTOMER APPROVAL SIGNATURE NAME IN BLOCK LETTERS			
MOULD EQUIPMENT ORDERED BY:		FINISH		30 x 60 CETIE BVS [GRP-29394]						DRN JG 23 Aug 04			
PLANT	A02 A03	BRIMFUL CAP.		385.2ml Nominal (A)						CHK PF DRC CS DESIGN GGD CPQ			
FOR LOCATION AND TYPE OF INKJET CODE REFER TO MANUFACTURING DATE CODE SPECIFICATION.		WEIGHT		350g		PROCESS		B&B		SCALE FULL SIZE			
		SURFACE TREAT.		Permanent		N.N.P.B. EQUIV.		N/A		DRAWING No. 30157-WS			